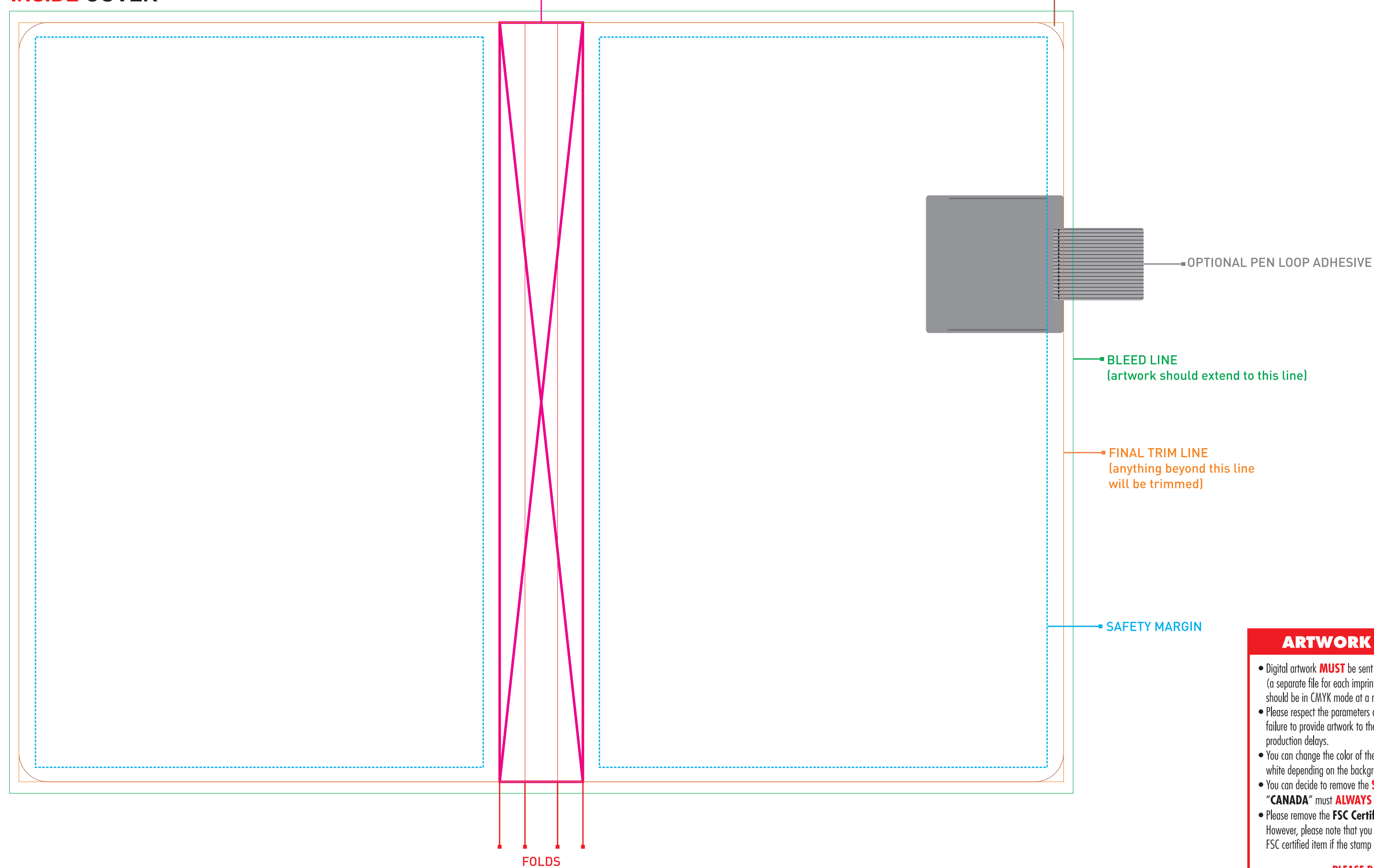


**MAGNA PERFECT BOUND JOURNAL - 5.5 x 8.25"**  
**150 PAGES**  
**OUTSIDE COVER**



**MAGNA PERFECT BOUND JOURNAL - 5.5 x 8.25"**  
**150 PAGES**  
**INSIDE COVER**



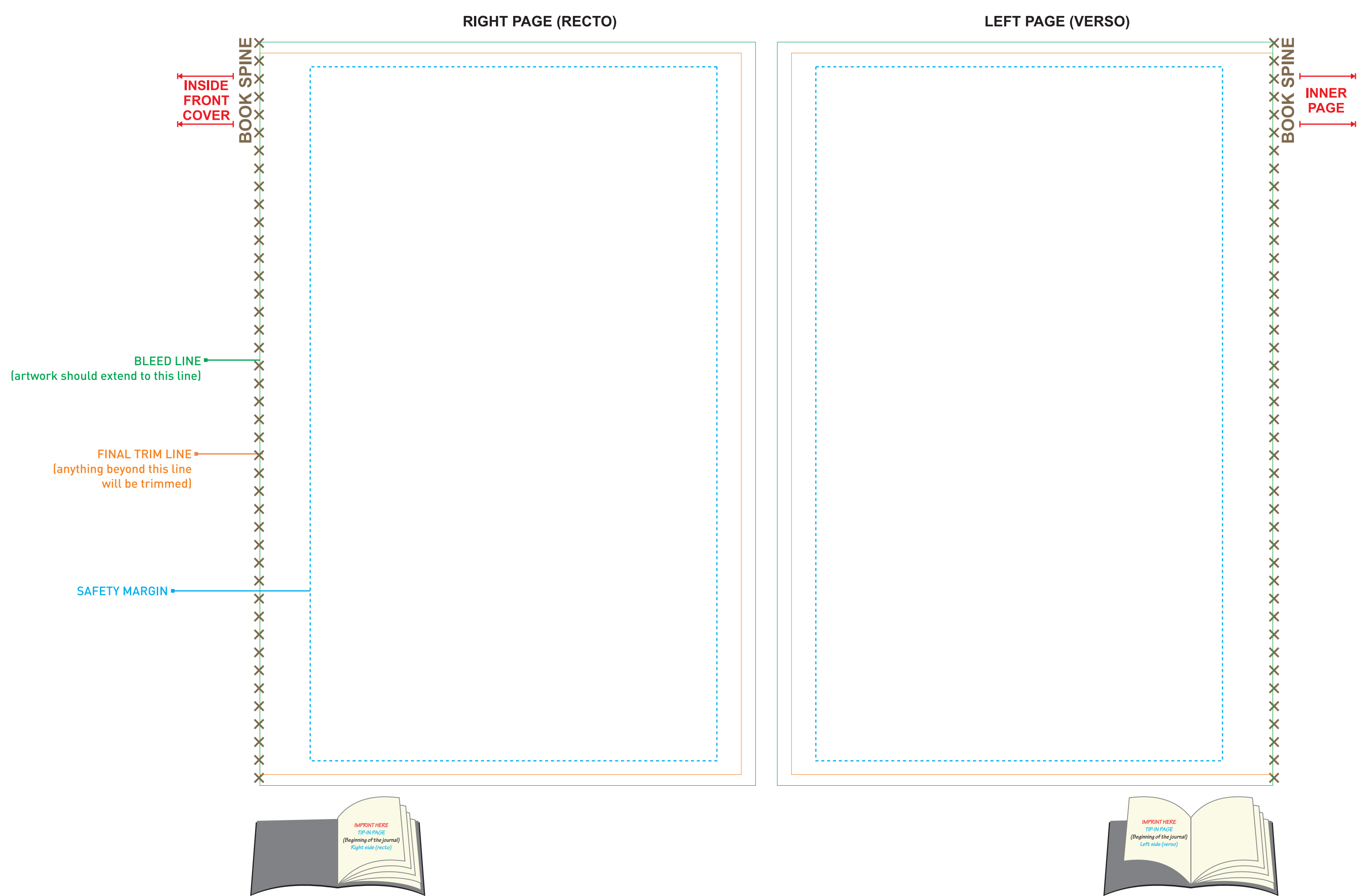
**ARTWORK SPECIFICATIONS**

- Digital artwork **MUST** be sent in a high resolution PDF file, (a separate file for each imprint) all fonts converted to curves and should be in CMYK mode at a minimum resolution of 300 dpi, sized at 100%.
- Please respect the parameters of this template and be advised that failure to provide artwork to the specifications listed above may result in production delays.
- You can change the color of the **SCRIBL** logo on the back to black or white depending on the background of your artwork. It cannot be resized.
- You can decide to remove the **SCRIBL** logo on the back but the word **"CANADA"** must **ALWAYS** be there to show the country of origin.
- Please remove the **FSC Certification** logo if you do not want it printed. However, please note that you will not be able to call this journal an FSC certified item if the stamp is removed.

**PLEASE REMOVE THIS STAMP.  
 DOTTED LINES AND ALL SPECIFICATION INFORMATION  
 BEFORE SUBMITTING YOUR ARTWORK.**

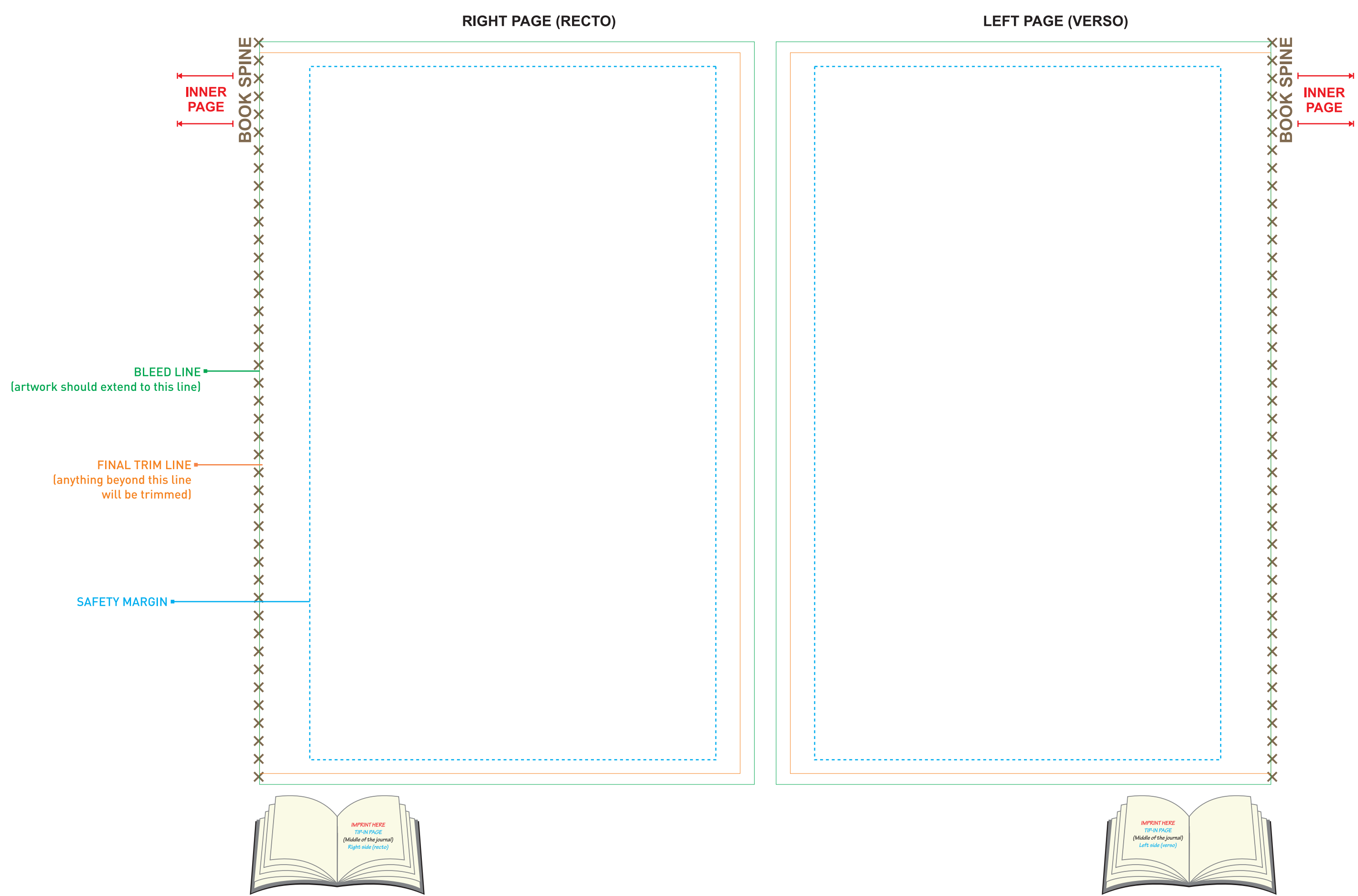
**MAGNA PERFECT BOUND JOURNAL TIP-IN PAGE - 5.5 x 8.25"**

**TIP-IN PAGE AT THE BEGINNING OF THE JOURNAL**



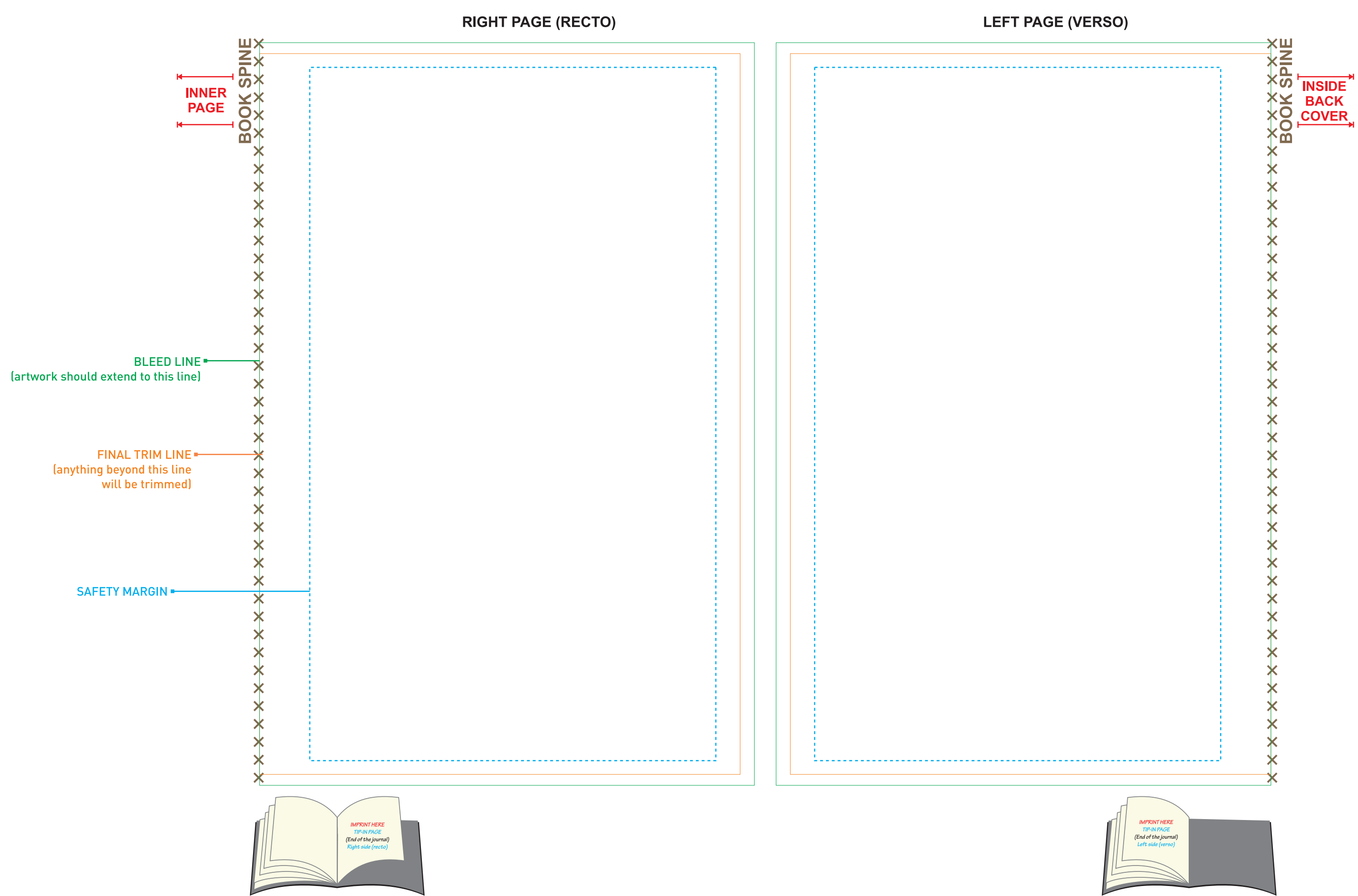
**MAGNA PERFECT BOUND JOURNAL TIP-IN PAGE - 5.5 x 8.25"**

**TIP-IN PAGE AT THE MIDDLE OF THE JOURNAL**



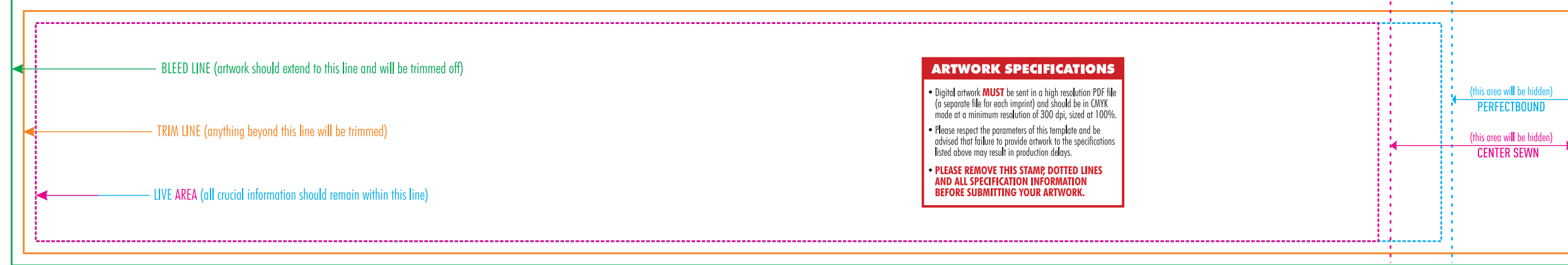
**MAGNA PERFECT BOUND JOURNAL TIP-IN PAGE - 5.5 x 8.25"**

**TIP-IN PAGE AT THE END OF THE JOURNAL**



### SCRIBL JOURNAL - 5.5 x 8.25" MAGNA - SINGLE JOURNAL

BLEED: 13 x 2.2 || TRIM: 12.8 x 2

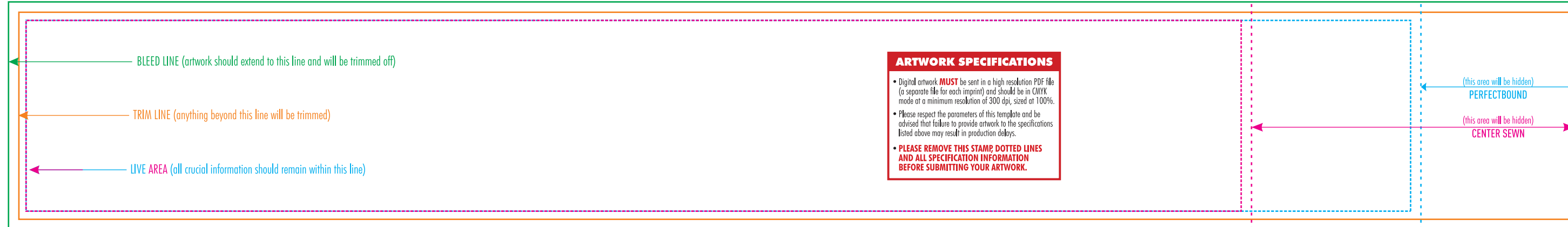


#### ARTWORK SPECIFICATIONS

- Digital artwork **MUST** be sent in a high resolution PDF file (a separate file for each imprint) and should be in CMYK mode at a minimum resolution of 300 dpi, sized at 100%.
- Please respect the parameters of this template and be advised that failure to provide artwork to the specifications listed above may result in production delays.
- **PLEASE REMOVE THIS STAMP, DOTTED LINES AND ALL SPECIFICATION INFORMATION BEFORE SUBMITTING YOUR ARTWORK.**

### SCRIBL JOURNAL - 5.5 x 8.25" MAGNA - 3 PACK

BLEED: 15.2 x 2.2 || TRIM: 15 x 2



#### ARTWORK SPECIFICATIONS

- Digital artwork **MUST** be sent in a high resolution PDF file (a separate file for each imprint) and should be in CMYK mode at a minimum resolution of 300 dpi, sized at 100%.
- Please respect the parameters of this template and be advised that failure to provide artwork to the specifications listed above may result in production delays.
- **PLEASE REMOVE THIS STAMP, DOTTED LINES AND ALL SPECIFICATION INFORMATION BEFORE SUBMITTING YOUR ARTWORK.**